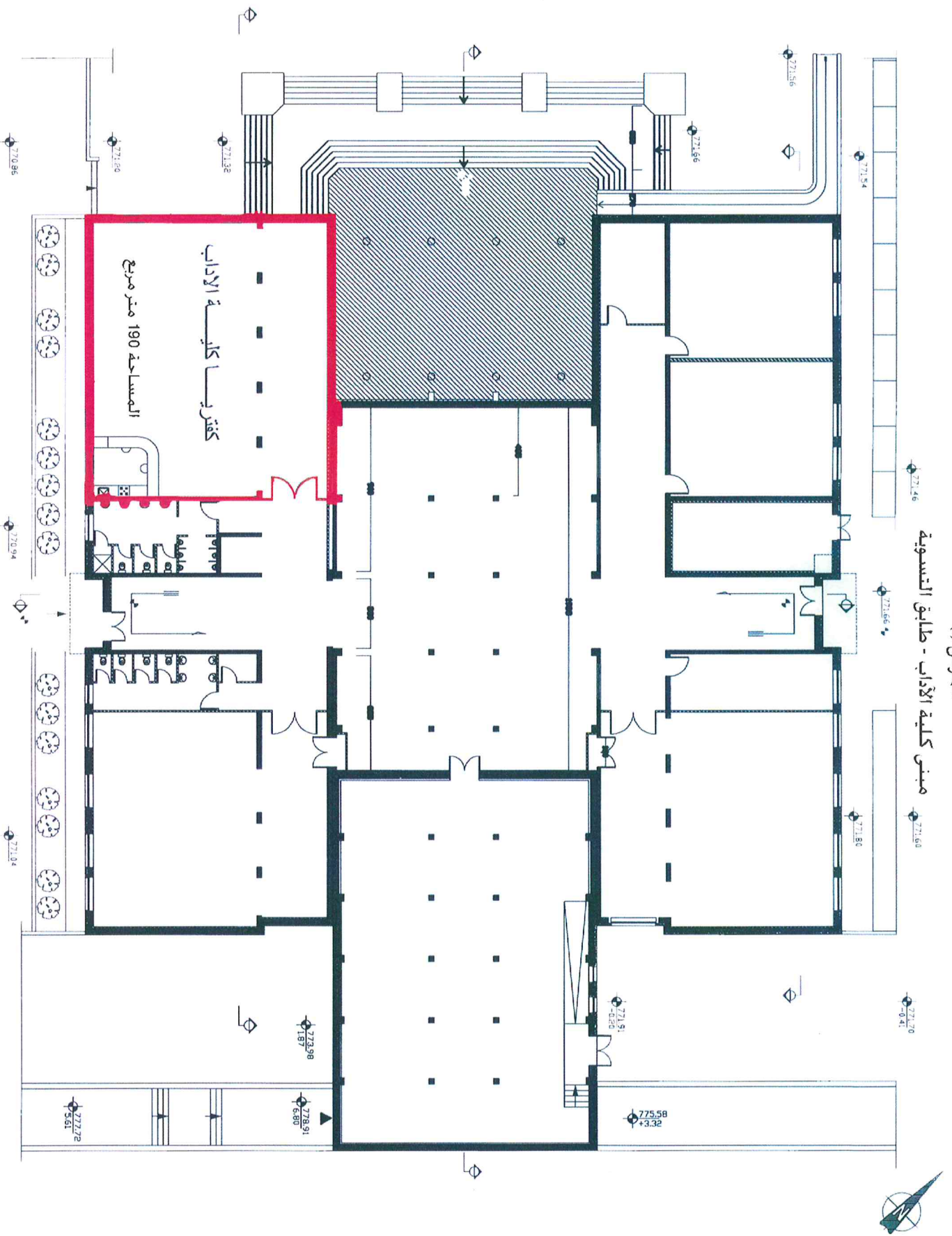


المرفوق (أ)
مبنى كلية الآداب - طابق التسوية



NOTES:-
- ALL DIMENSIONS ARE IN CM.
- ALL LEVELS ARE IN M.
±0.00 = 772.1

CEILING FINISH: FLOOR FINISH
WALL FINISH: FLOOR WALL

B.F. - BASEMENT FLOOR
G.F. - GROUND FLOOR
F.F. - FIRST FLOOR
S.F. - SECOND FLOOR
R. - ROOF FLOOR

1-04. PAINT/PLASTER FOR CONCRETE (from top of the panel to 10 mm)
2-RECURTION PAINT FROM F.F.L. OVER/15mm/ OTHER 25mm/ 10 CM.
3-WALL CERAMIC TILES 200X300mm
4-30MM FLOOR
5-30MM FLOOR
6-CERAMIC TILES 200X300mm
7-REBARAZO TILES 300X300mm
8-LOCAL MARBLE TILES
9-WALL CERAMIC TILES 200X300mm
10-Ferriole Tile IN KITCHEN
11-FLOOR CEILING
12-LOCAL MARBLE TILES

LEGEND:
- ROOM NUMBER
- SECTION NUMBER
- REFERENCE POINT NUMBER
- ROOM NUMBER
- IC CONCRETE
- ZZZZ VOLUME BLOCK
- FLOOR 1-4 cm
- CONCRETE
- WALL 100, 200 IN PLAN
- WALL 100, 200 IN PLAN
- EXPANSION JOINT

Thabor Consult
Engineering Office
Riadah, Saudi Arabia
Tel: +973 2 388 2882
Fax: +973 2 388 2882

PROJECT:
AZEEZ SHAHEEN BUILD

OWNER:
Birzeit University

DRAWING TITLE:
Birzeit University

DESIGNED BY: BUC
E. Adel Fakhri 5104
F. Mohamed Ibrahim 5859
CHECKED BY: A-
E. Adel Fakhri 5104
F. Mohamed Ibrahim 5859
DATE: 17/3/2005
SCALE: 1/1